



# Enhancing Intergenerational Connections Through the Arts

November 13, 2023

**generations  
united**

Because we're stronger together®

This webinar is presented as part of Generations United's Shared Site Learning Network which is made possible with support from The Eisner Foundation.

# Today's Presenters:

- Nancy Henkin, Senior Fellow, [Generations United](#)
- Susan Langford, Director, [Magic Me](#), London, England
- Jennifer Kulik, Founder and CEO, [SilverKite Community Arts, LLC](#), Seattle, Washington
- Jessica MacLeod, Director, [Child Development Center, University of Rhode Island](#), Kingston, Rhode Island
- Renee Griffin, Creative Aging and Partnerships Officer, [Senior Services Intergenerational Center for Arts and Wellness](#), Winston-Salem, North Carolina



**CONNECTING GENERATIONS**

<https://magicme.co.uk/>







***“To inspire change - for individuals,  
communities and systems -  
through extraordinary art,  
sparking magic between  
generations”***



***Everyone, whatever their age,  
has a past, a present, a future  
and an imagination***





***Exchange is vital.***

***It is not enough to have younger and  
older people working alongside each  
other on the same activity***































***Younger and older people  
come together as equal partners  
with a common purpose***







DON'T WAIT  
FOR CHANGE

WOMEN'S  
A FAIR  
CHILDREN'S  
FUTURE  
SHARE

THE  
DON'T



TA  
BI





Generation Rebellion: the power of intergenerational activism | #COP26

40 watching now - Scheduled for Nov 10, 2021

Like Dislike Share Save

COP26

Chat is disabled for this live stream.

Likeable Related From COP26

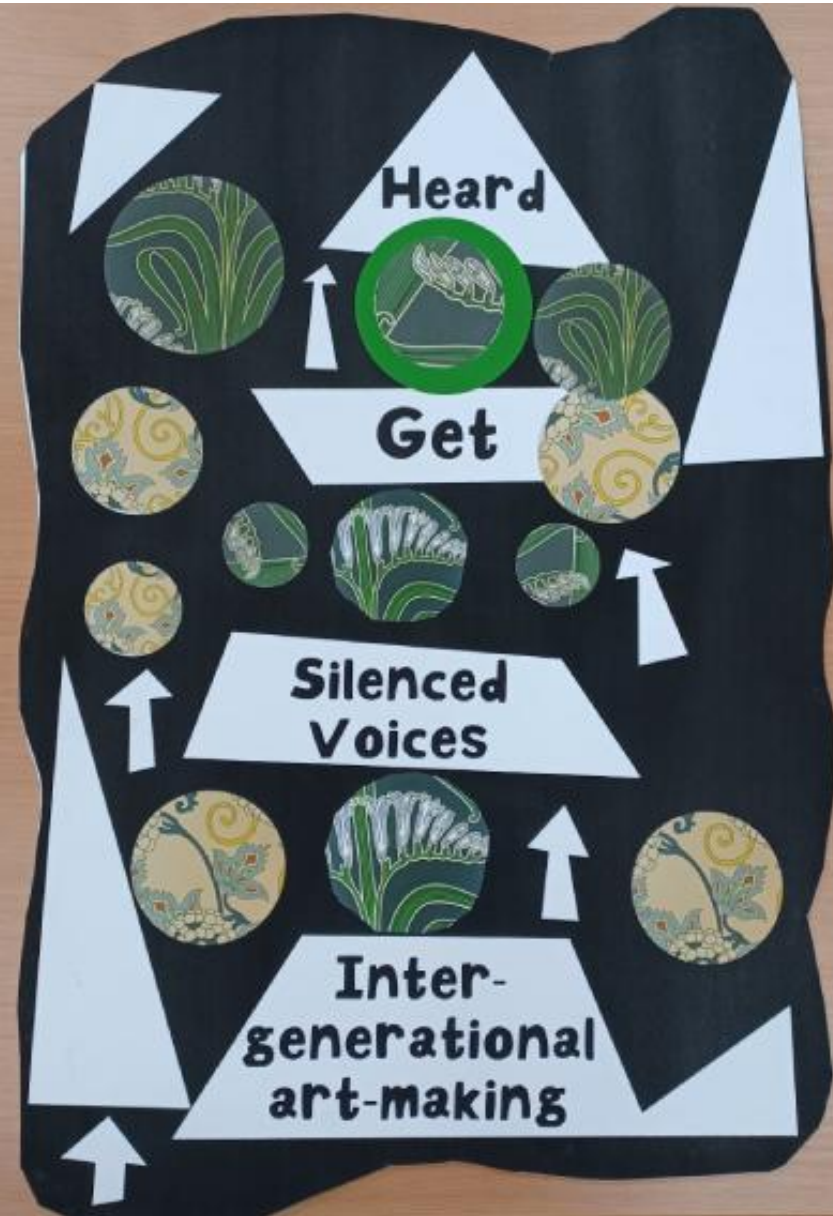
- Migrant Justice + Climate Justice | #COP26  
COP26  
456 views · Streamed 21 hours ago
- The North West Presents: Talking about my Generation L...  
COP26  
1.12 views · Streamed 19 hours ago
- Economics of Climate Change | #COP26  
COP26  
2.55 views · Streamed 7 days ago
- Climate Science Olympiad 21 award ceremony with Jane...  
COP26  
1.55 views · Streamed 19 hours ago
- Former President of the United States Barack Obama at...  
UN Climate Change  
456 views · Streamed 1 day ago
- Schools programme, with Chris Packham | #COP26  
COP26  
90 watching  
**LIVE NOW**
- Accelerating Electric Mobility with green jobs and gender...  
COP26

Feeling  
isolated





**Racism and  
Sexism  
steal our  
voices**





***We are all ageing,  
not just those whom society labels old***







***“A world without ageism, where everyone can enjoy their unique creativity and full potential”***





**D**ream **D**inner **P**arty

Lorena. Beardmore

Who would you invite?

Charles & Prince Harry  
Michelle A  
Joan  
Valerie & Marian

What would you eat?

Fish chips  
Spasett  
Bolognaise

What would you drink?

White Wine  
Orange Juice  
Coca-Cola

What would you

LET'S DANCE







# SilverKite's Intergenerational Programs

- Jennifer Kulik, Ph.D.
- Founder & CEO
- SilverKite Community Arts, LLC®
- [www.silverkite.us](http://www.silverkite.us)



# SILVERKITE COMMUNITY ARTS®

- Intergenerational Arts Programs
- Creative Aging: Arts Classes with Older Adults
- Professional Development & Consulting
- Program / Arts Engagement Resources





# SilverKite's Program Principles



Connection



Play



Create



Feel a sense of accomplishment



Joy



Moment to shine

# Why the Arts?

Common language

Connect souls and selves

Container / structure for play

Find flow

Introduce new ideas

Boosts self-esteem



# Three Types of Arts-Based Intergenerational Programming

## School / Org- Based Intergenerational Programs

- School / curriculum based
- Arts organization based
- Short / long term

## Arts for All Intergenerational Programs

- Offered in public spaces
- Often as a drop-in experience
- IG "taster"

## Intergenerational Theatre Company

- Storytelling performance based on the cast members' lives
- 11 productions
- Annual
- IG model

# School-based program: Memory Box

- Students develop oral history and interviewing skills
- Interview older adults from the community
- “Give back” the stories that were shared with a memory box (or other art making)









# Arts for All program: Arts in the Parks

- Offered in public spaces
- Other draws (meals, sports events, holiday celebrations)
- Drop in experience
- Sit at a table and make art together









# Intergenerational Theatre Company

- Original performance piece based on the life stories of the cast members
- Each cast member in a different decade of life
- Tour to schools, senior centers, etc.
- Talk back with the audience







# Consider...

- Prep participants ahead of the first session
- Have a plan!
- Teachers / learners / new things
- Have something they can accomplish in one session
- Finding something in common helps foster relationships
- Create multiple ways to encourage conversations, interactions
- Cultivate community partnerships
- Be creative about funding



# Jennifer Kulik, Ph.D.

- Founder & CEO
- SilverKite Community Arts, LLC®
- [www.silverkite.us](http://www.silverkite.us)
- (360) 218-4884
- [jen@silverkite.us](mailto:jen@silverkite.us)





URI CHILD DEVELOPMENT CENTERS  
DEPARTMENT OF HUMAN DEVELOPMENT AND FAMILY SCIENCE

THE UNIVERSITY OF RHODE ISLAND





# The University of Rhode Island Child Development Centers' Intergenerational Art Project

Jessica L. MacLeod, M.S.  
Director, URI Child Development Center

The Intergenerational Art Project was made possible with grant funding from Peace Educators Allied for Children Everywhere (2021-2022) and the International Association of Laboratory Schools (2022-2023).



THE UNIVERSITY OF RHODE ISLAND





# URI Child Development Centers

---





# Agenda

---

- Planning and preparation
- Project goals
- Forming collaborative partnerships
- Recruitment, orientation, and introductions
- Project implementation
- Lessons learned and tips for success



# Planning and Preparation

---

- Consulting with an older adult development expert
- Brainstorming collaboratively with teachers
  - Plans for including older adults
  - Selecting art experiences
    - Connecting with curriculum
  - Mapping out timelines





# Project Goals

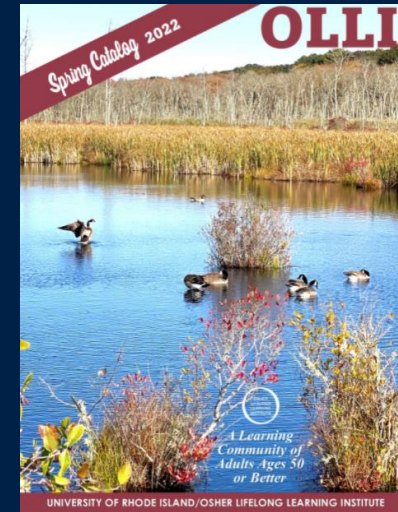
---

- Offer a series of collaborative creative art experiences for preschool children, young adults, and older adults.
- Facilitate social connectedness and meaningful intergenerational interactions for all project participants.
- Curate an intergenerational art show open to the public in an accessible community location.



# Forming Collaborative Partnerships

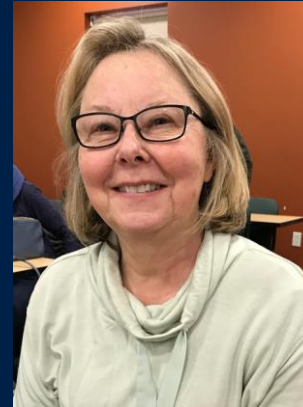
- **URI Child Development Centers (CDCs)**
  - Preschool Children and Families
  - Teachers, Director, Office Manager, and Undergraduate Students
- **Osher Lifelong Learning Institute (OLLI)**
- **City of Providence Senior Services**
- **City of Providence Community Helpers**
- **Grandparents**





# Recruitment, Orientation, and Introductions

- Recruitment email to OLLI members
- Flyers posted in OLLI lounge
- Information and orientation session at OLLI
- Questionnaire for OLLI members
- Meet the Artists online album
- Orienting children and URI students
- Getting started in the classroom



Jean L. - Jean is from Waterbury, CT and now lives in Charlestown, RI. She is a retired special education teacher from Newtown, CT. Jean is married with four daughters and seven grandchildren. Her hobbies include refinishing furniture and art. Jean is looking forward to working with the children at the CDC!



Jean G. - Jean is originally from Easthampton, MA and now lives in Wyoming, RI. She is an international felting artist and sells handmade art to wear. Jean's husband is a retired chef. She has one daughter, who is a breast cancer research scientist. Jean's hobbies include Nuno felting, painting, knitting (check out the amazing sweater she is wearing in this photo!), and anything creative. She loves to walk on the beach and walk trails with her 12 year old rescue dog named Augie. Jean loves spending time with her grandchildren - she finds children to be fun and fascinating!

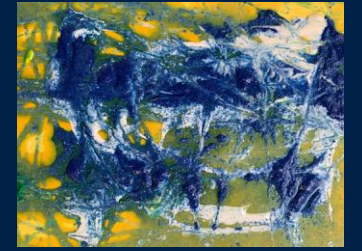
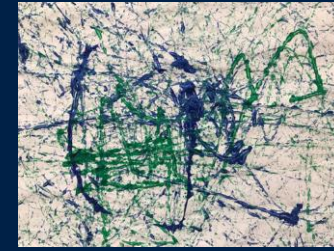


# Artists of All Ages





# Rolling Painting





# Watercolor Painting





# Special Places Photography



**Dino's Tree**

"This is Dino's tree. He lets us climb it. I can climb very high!"

-Preschool Child, Age 3



**Our Neighborhood**

"Sometimes we go to visit Brown Cow, and we feed her grass."

-Preschool Child, Age 3



**My School**

"I like my school. I play with my friends Maeve, Isla, Zeke, AJ, and Oscar."

-Preschool Child, Age 4



**The URI Garden**

"I found the gardens at the beginning of my freshman year when I was far from home and didn't know anybody. I found such comfort in the greenery. It is one of my favorite places to go when I am stressed!"

-URI Student, Age 18



**Brown University Campus**

"First came to Brown campus in 1956 at age 18. I met my husband there, I learned to think! The campus is beautiful, historic, architecturally interesting. One tree planting is a memorial to our daughter...it grows on beautifully. We visit every year and marvel at this special place."

-OLLI Member, Age 83

# Special Places Photography

---



## Beavertail State Park

“Always a relaxing place to walk, enjoy the views east, south, and west. A beautiful lighthouse full of history and nature paths that ‘talk to you’”.

-OLLI Member, Age 72



## Green Hill Beach

“This is the beach my family goes to. I like to play in the sand and the ocean with my cousins. We play many games together, like dinosaurs and lava. The water is lava.”

-Preschool Child, Age 4



## East Matunuck State Beach

“I was at the beach and it was fun. I found lots of seashells. They’re in my car seat.”

-Preschool Child, Age 4



## Napatree Point

“My whole family enjoys the beauty of this special place. It is a great place for a long peaceful walk on the beach. This is one of our favorite places to watch the sunset.”

-Preschool Director, Age 41



# Weaving







# Self-Portraits





# 3D Construction Art





# Art Show

## The Intergenerational Art Project

Artwork by URI Child Development Center Preschool Children and Staff,  
URI Human Development and Family Science Undergraduate Students, &  
URI Osher Lifelong Learning Institute Older Adults



Exhibit on Display at the Kingston Free Library (October 2023)



Artwork created by URI community members of all ages will be on display throughout October 2023

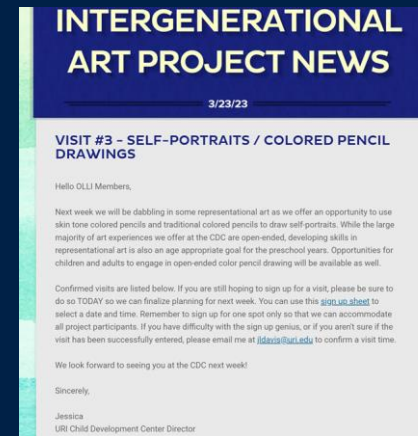
Kingston Free Library Entryway Gallery  
2605 Kingstown Rd. Kingston, RI 02881

Monday and Tuesday 10-6  
Wednesday 10-8  
Thursday 12-8  
Friday and Saturday 10-5



# Lessons Learned and Tips for Success

- Consider adult learning theory
- Ample planning and prep time is essential
- Nurture mutually beneficial partnerships
- Collaborative planning is key
- Invest time in orientation and meaningful introductions
- Clear, ongoing communication is necessary
- Be intentional about fostering a sense of community
- Create sustainable systems
- Seek and implement feedback



03/01/2023 Wednesday	URI CDC Maple Classroom	9:30am-10:00am	OLLI Members All 2 slots filled
	URI CDC Magnolia Classroom	11:00am-11:30am	OLLI Members 1 of 2 slots filled
		2:00pm-2:30pm	OLLI Members 1 of 2 slots filled

**Intergenerational Art Project (Spring 2023)**  
**Activity: Watercolor Painting**  
**Schedule for OLLI Student Visits**

Date	Visit Time	Classroom	OLLI Member(s) Visiting
2/13/23	9:30-10:00 am	Maple Classroom	Louis Ron
	11:00-11:30 am	Magnolia Classroom	Sherry Donna
	2:00-2:30 pm	Maple Classroom	Patricia Su-Shia
	2:00-2:30 pm	Magnolia Classroom	Robyn
2/14/23	9:30-10:00 am	Maple Classroom	Jean L.
	2:00-2:30 pm	Maple Classroom	Barbara
2/15/23	9:30-10:00 am	Maple Classroom	Sandra Kathleen
		Magnolia Classroom	Jean G. Kathy
	2:00-2:30 pm	Magnolia Classroom	Denise Linda







Thank you!

Jessica L. MacLeod, [jldavis@uri.edu](mailto:jldavis@uri.edu)





**The Senior Services Intergenerational Center for  
Arts and Wellness: Committed to Intentional  
Intergenerational Interaction**

---

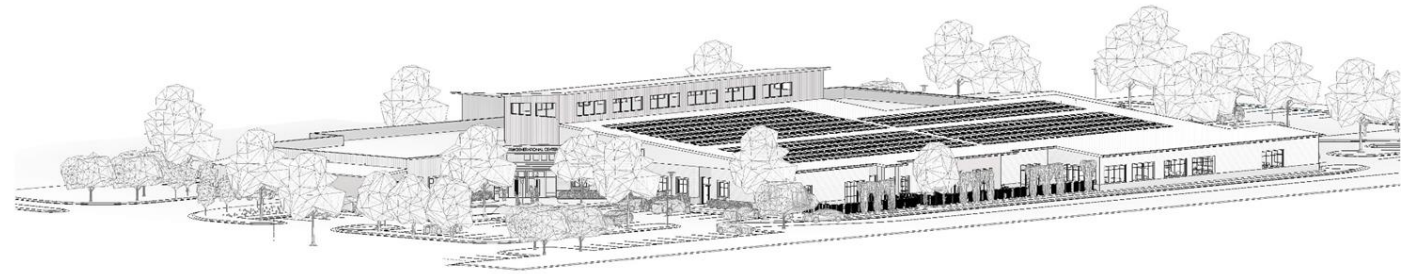




# Intentional Building Design



SENIOR SERVICES  
INTERGENERATIONAL FACILITY



WORKPLACE  
ARCHITECTURE+DESIGN

WORKPLACE  
ARCHITECTURE+DESIGN



# Generations Center Floor Plan





# Welcoming Entrance



# Main Street





# Main Street and Mural

---



# Intentional Partnerships

- Developed Collaborator's Agreement
- Leveraged Existing Relationships
- Asked Partners to Identify Internal Champions
- Hired Independent Facilitator
- Developed Collaborative Charter for Partnership





# Service Delivery in Shared Space

## COMMUNITY COLLABORATORS

- a/perture cinema
- Arts Council of Winston-Salem
- Authoring Action
- Cancer Services
- Family Services \*
- 40+ Stage Company
- Hands On Northwest NC \*
- Hispanic League \*
- Maya Angelou enter for Health Equity
- Novant Health \*
- Sawtooth School for Visual Art \*
- SECCA
- Second Harvest/Providence \*
- Shepherd's Center of Greater W-S
- Sticht Center for Healthy Aging and Alzheimer's Prevention \*
- Trellis Supportive Care (Hospice – Palliative)
- UNC School of the Arts
- WFU Dance/IMPROVment
- WSSU Health Sciences \*
- Winston-Salem Symphony
- \* Collaborators in dedicated/leased space



A Community of Solutions



# Relationship Building Strategies

One-on-one Lunches

Community Building Activities

Surveys

Volunteer opportunities

Site Tours





# Intentional Programming

- Partner's Retreat
  - Speed Planning





Contact Information:  
Renee Griffin, Creative Aging and  
Partnerships Officer  
[rgriffin@seniorservicesinc.org](mailto:rgriffin@seniorservicesinc.org)  
336-721-6928

---





# Thank you!

Contact [gu@gu.org](mailto:gu@gu.org) for more information  
or visit [www.gu.org](http://www.gu.org).

**generations**  
**united**<sup>®</sup>

Because we're stronger together<sup>®</sup>