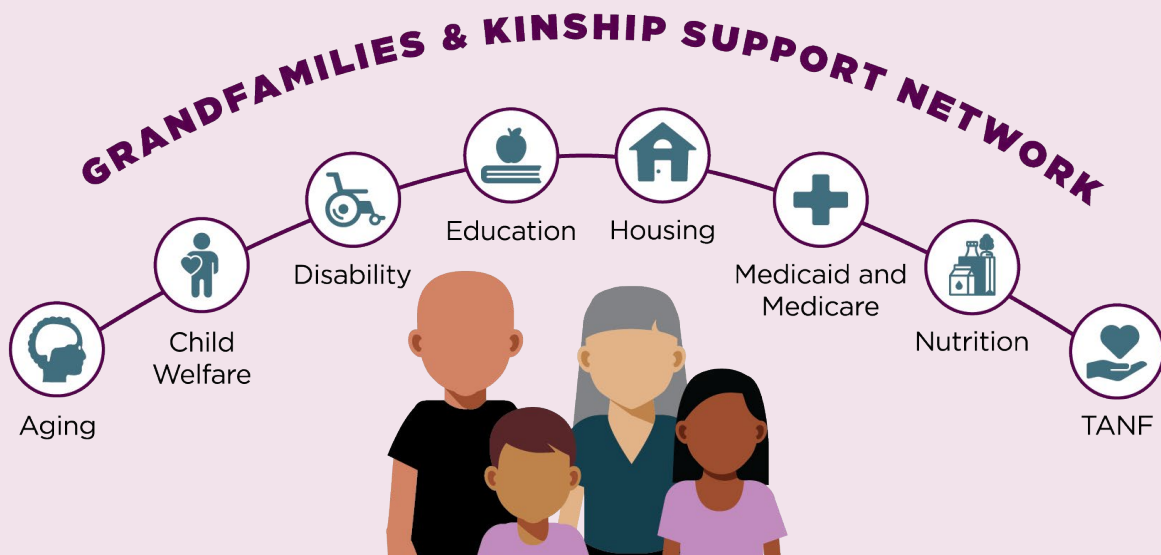


Kinship and grandfamilies are formed out of love and necessity when relatives and friends take on the responsibility of raising children whose parents are unable to do so. Research shows that children are more likely to thrive in kinship and grandfamilies than in non-kin foster families.

However, many kinship and grandfamilies lack the support they need. Too often, systems and policies in states, tribes, and territories are aimed at parents and do not consider or respond to the strengths and needs of kinship and grandfamilies.

The Grandfamilies & Kinship Support Network (Network)* is the first-ever national technical assistance center for those who serve kinship and grandfamilies. The Network exists, free of charge, to offer a new way for government agencies and nonprofit organizations in states, tribes, and territories to collaborate and work across jurisdictional and systemic boundaries—all to improve supports and services for grandfamilies and kinship families. Our work is rooted in cultural competence and linguistically appropriate approaches and is fully accessible to people with disabilities.



HOW THE NETWORK OPERATES

With funding from a five-year cooperative agreement with the U.S. Department of Health and Human Services' [Administration for Community Living](#) (ACL), [Generations United](#) operates the Network with four managing partners: [National Caucus and Center on Black Aging](#), [National Indian Child Welfare Association](#), [USAging](#), and [ZERO TO THREE](#). A fifth partner, [Child Trends](#), evaluates our work.

The nation's leading experts on kinship and grandfamilies, including those who bring the fundamental expertise of being a grandfamily member, are working together with the partner organizations to improve services and supports for the families.

WHO THE NETWORK SUPPORTS

The Grandfamilies & Kinship Support Network will create lasting change for families around the country by connecting and supporting:

- **Policy and program leaders** at aging, child welfare, disability, education, housing, nutrition, Medicaid and Medicare, and Temporary Assistance for Needy Families (TANF) **government agencies in states, tribes, and territories;**
- **Kinship navigators;** and
- **Leaders of community and faith-based organizations** focused on supporting kinship and grandfamilies.

WHO THE NETWORK IMPACTS

While the Network is not designed to help individual kinship or grandfamilies with their specific cases, they will be at the core of our work, guiding and informing it. By targeting those organizations and providers that directly serve the families, the Network can help guide systemic reforms to support kinship and grandfamilies now and into the future.

WHAT THE NETWORK CAN DO FOR YOU

You will learn from a nationwide network of your peers and access seamless support and resources from renowned experts with a wide range of subject matter knowledge—doctors, lawyers, caregivers, social workers, and policy and program experts across an array of fields. Together, they will holistically address the needs of kinship and grandfamilies and help improve all the key supports impacting them.

The Grandfamilies & Kinship Support Network participants' knowledge-sharing will be documented and disseminated to increase everyone's collective capacity to serve. Participants will have the opportunity to access:



Convenings

The Network will hold six virtual regional convenings in the first year, including one specifically for tribes, for agencies and organizations to learn from their peers, create action plans to improve collaboration and effectiveness, and share promising practices and programs.



Learning Collaboratives and Information Dissemination

To continue the work of the convenings, the Network will facilitate quarterly learning collaboratives and host webinars.



Targeted, Specialized Support

For jurisdictions that want and are ready for a larger investment of effort, the Network will help optimize their collaborative approaches and improve their services. Solutions will be replicable for others.



Centralized Hub

The Network will develop a fully accessible website of exemplary kinship and grandfamily practices and programs from around the country. Resources will include fact sheets, how-to guides, webinars, and toolkits and will reflect the outcomes of the Network's knowledge-sharing.



JOIN US!

Sign up to access all of these supports, including interactive learning opportunities, a monthly newsletter, and other resources. You will learn from others, share your knowledge, and help create seamless kinship supports in your community—all free of charge.

For more information, visit [gu.org](https://www.gu.org).

**generations
united**

Because we're stronger together®

*The Grandfamilies & Kinship Support Network is supported by the Administration for Community Living (ACL), U.S. Department of Health and Human Services (HHS) as part of a financial assistance award totaling \$9,950,000 with 95 percentage funded by ACL/HHS and \$523,684 and 5 percentage funded by non-government sources. The contents are those of the authors and do not necessarily represent the official views of, nor an endorsement, by ACL/HHS, or the U.S. Government.